

# ***Kanlux***

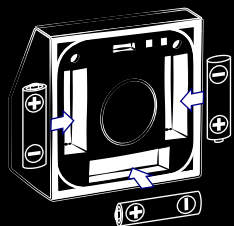


**Kanlux**  
**IRS3xAAA**  
Motion Sensor  
LED Lamp



# Kanlux

TWILIGHT AND  
MOTION SENSOR



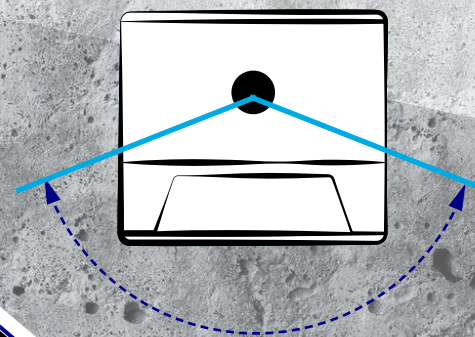
**3X AAA BATTERIES**  
BATTERIES NOT INCLUDED

## Kanlux IRS3xAAA

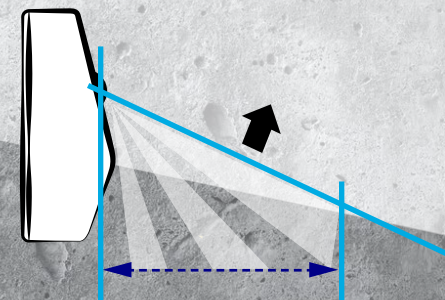
Kanlux IRS3xAA is a **staircase light** fitting powered by three AAA batteries.

The lamp can operate in one of three modes:

- **ON** - always on
- **OFF** - always off
- **AUTO** - turns on at low light or upon detecting motion (thanks to a twilight and motion sensor).



**120°**



**max 5m**



# Kanlux

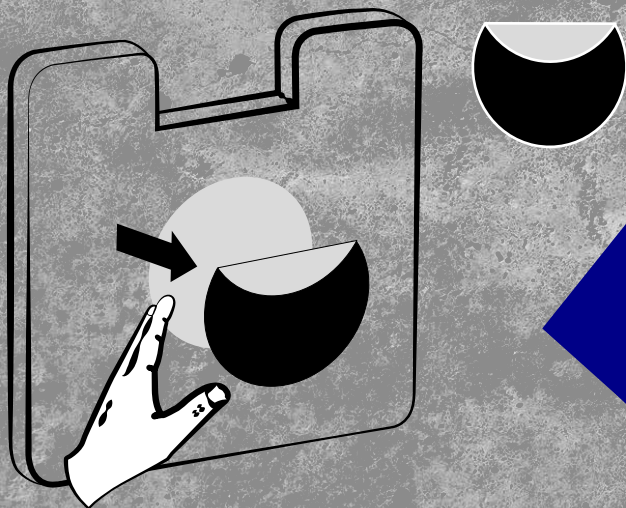


## Kanlux IRS3xAAA

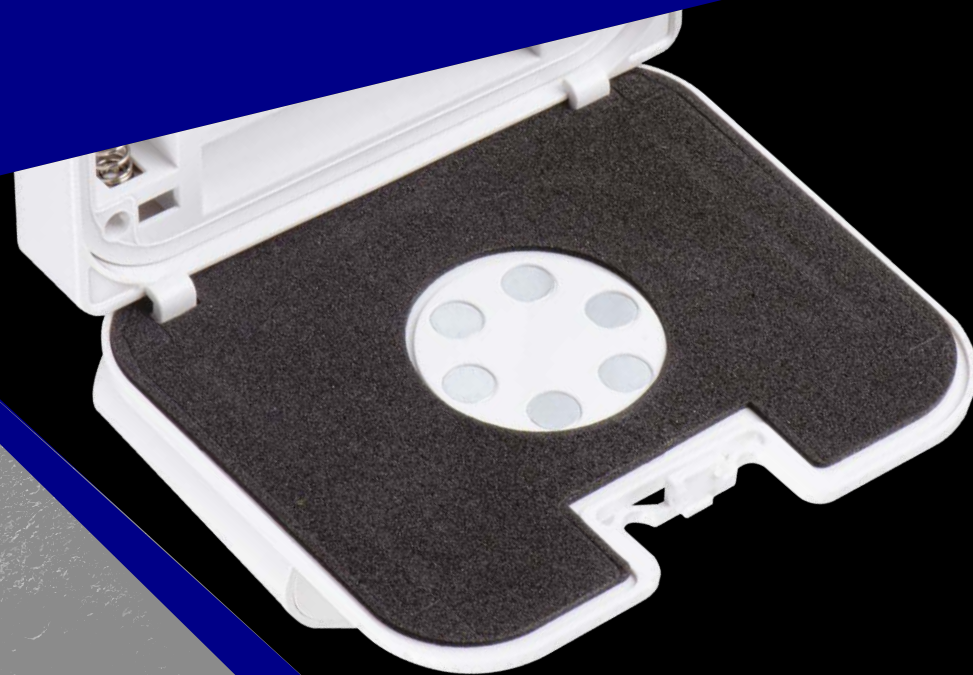
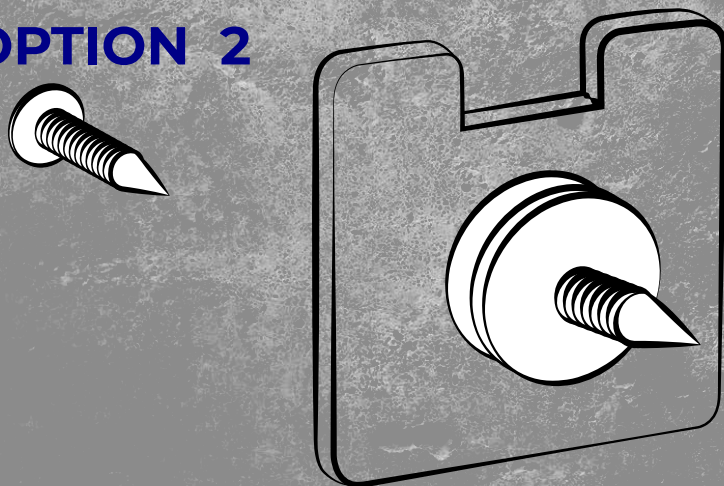
### Easy installation — tailored to your needs..

Kanlux IRS3xAA can be mounted using **adhesive tape** or a **mounting screw** (included). Its great advantage is the option to set it up in places where no electrical connection is available.

#### OPTION 1



#### OPTION 2





# Kanlux

## **Kanlux IRS3xAAA**

**Wide range of applications-**  
suitable for use in areas where no electrical  
connection is available, e.g. as a staircase,  
lobby, hallway or bathroom light fixture.



# Kanlux

## Kanlux IRS3xAAA

Batteries:  
**3 X AAA**  
**1,5V DC**

Service life:  
**25 000h**

Electric shock protection class:  
**III**

Permissible ambient  
temperature range [°C]:  
**0÷25**



**37392** IRS3xAAA LED PIR W-NW



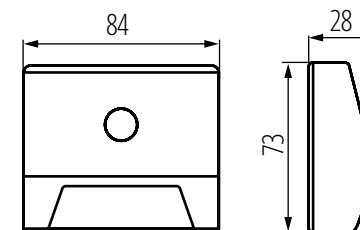
0,3W



10lm

4000K

## securely packaged



**kanlux.com**